



Tina Release Notes

Contents

Revision History.....	1
Tina 2020 - New Features.....	2
Agent for Office 365 OneDrive.....	2
Support of OceanStor snapshot.....	3
Security enhancements.....	3
Compatibility with Deduplication (ADE 5.1)	3
Fixed issues.....	3
Known Issues.....	4

Revision History

Revision	Date	Description
1	December 2019	Release Tina 4.6.5
2	May 2020	Release Tina 4.6.6
3	October 2020	Release Tina 2020

Tina 2020 - New Features

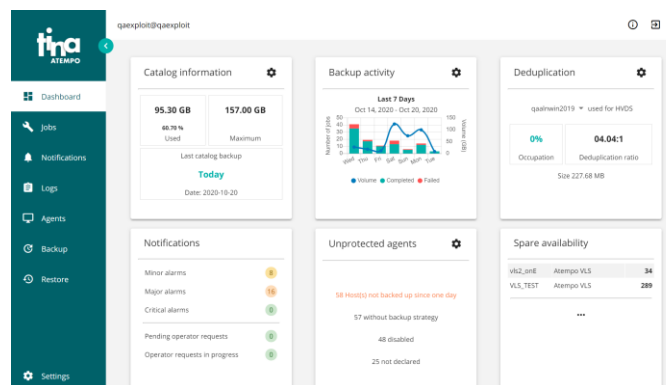
- Web UI (html) for configuration, administration and supervision
- Support for Microsoft OneDrive
- Security enhancements
- User lock on incorrect username/password
- Support for OceanStor snapshot



Web Admin

New web UI (html) for administration, configuration and supervision of backup activity. This new web UI currently includes:

- Dashboard with 6 tiles
- Jobs
- Notifications
- Logs
- Agents
- Backup
- Storage
- Settings
- Archive
- VMware Restore (vault)



Certain functionalities are not currently available in this version, such as Library Management, Advanced Device Detection, creation of SAN and snapshot management, advanced settings such as domain filtering etc. These functions continue to be available through the classic Administration or the web UI (flash).

We will be adding functionality for various components in the next release, Tina 2020 R1.

Agent for Office 365 OneDrive

Tina 2020 supports backup and restore of Office 365 OneDrive documents (in addition to email). Backup selection can be set on individual mailboxes in order to parallelize the backup and reduce the backup time.

Supports backup to disk, deduplication storage or tape.

Think 3-2-1 with backup on premise and duplicate to off-site for optimal security of data.



Support of OceanStor snapshot

Tina 2020 introduces support for OceanStor v5 NAS with snapshot support of volumes for restore of individual folders or files.

Security enhancements

Tina 2020 requires passwords to be minimum 8 characters, mixed uppercase, lowercase and special character.

In the event of unsuccessful login attempts, with username or password the account will be locked for a period of 30 minutes. Only the Administrator will be able to unlock the account before this allocated time.

Compatibility with Deduplication (ADE 5.1)

To improve performance and scalability, the deduplication engine has been changed.

Upgrade

This is transparent for the administrator. The duration for the migration will depend on the hardware used.

You will require twice the size of your existing database (free space) to perform the migration. No backup or restore operations are authorized during this time.

Fixed issues

Problem summary	Description of fix	Found in version	Fixed in version
Synthetic backups (forever incremental) fails if tar and/or sidf has been used.	Fixed in code	Tina 4.6.5	Tina 4.6.6



Known Issues

1. tina_shell does not support handle variable names that contains special characters, such as circumflex accent (^).
2. In some cases, the Job Manager will not display the detailed information on certain jobs that have failed on error. The Tina events can be used in this case. Once the purge task is complete either automatic or manual this issue is resolved.
3. Red Hat 8.0 – ARRS failed on Linux with message: libnsl.so.1: cannot open shared object file.
4. Hyper-V with Deduplication Storage (HVDS), issues with some backups failing.
5. NED (Network encryption) is not supported with HV Agent for VMware. This is due to OpenSSL 1.1.1 being default version with Tina 4.6.6 to fix security issues.
6. Windows 2019 UEFI not supported with BMR Windows (SRA).
7. **ARRS** - since Tina 4.6.6 ARRS is not included due to issues with PostgreSQL versions (incompatibility versions) and has not been included with Tina 2020
8. HyperStream (HSS) drives cannot be renamed.
9. OceanStor – special characters are not currently supported.
10. Office 365 – users with Guest access (users outside the organization) are not protected.
11. VMware vCenter 6.7 requires an environment variable to be set to force the version of the VDDK.
example: TINA_VCB_VDDK_PATH=7.0
12. Upgrade from Tina 4.6.5 to Tina 4.6.6 or Tina 2020, VMware 7 (VDDK 6.7 and 7) with Windows proxy, backups may fail. This is currently under investigation.
Customers are advised not to upgrade their **Windows proxy** to the latest version but to remain on Tina 4.6.5.
13. Web UI – VM Restore on Windows. To authenticate for restore use the domain\username in the field username.

Support & Download

To download the latest version of Time Navigator please visit our Customer Portal:

<https://support@atempo.com>

If you have not received your connection information, please contact our Support team:

Via email support@atempo.com

By phone :

USA : + 1 415 915 3234

EMEA/APAC +33 164 868 383